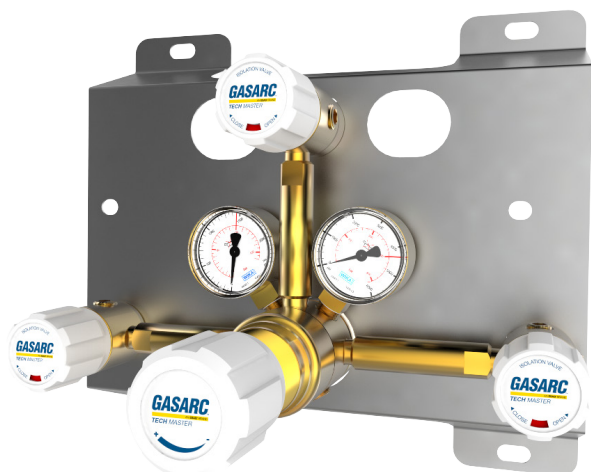


## TECH MASTER GPM4200 SERIES

### 4.5 Purity Two Stage Brass Barstock Piston Manual Change Gas Control Panel

The Tech Master GPM4200 series two stage manual change control panels are designed for primary pressure gas control of non-corrosive or toxic, technical gases up to grade 4.5 purity (99.995%), on gas distribution systems where constant delivery pressure is required.

- **GPM4221 Series** | Two Stage Single Cylinder Piston Manual Gas Change Control Panel, FKM Seal
- **GPM4222 Series** | Two Stage Single Cylinder Piston Manual Gas Change Control Panel, EPDM Seal
- **GPM4241 Series** | Two Stage Twin Cylinder Piston Manual Gas Change Control Panel, FKM Seal
- **GPM4242 Series** | Two Stage Twin Cylinder Piston Manual Gas Change Control Panel, EPDM Seal



### ★ FEATURES

- High pressure isolation valves
- Two stage pressure regulation
- Process line isolation valve
- Encapsulated seat design
- Single and twin cylinder configuration

### 📄 MATERIALS

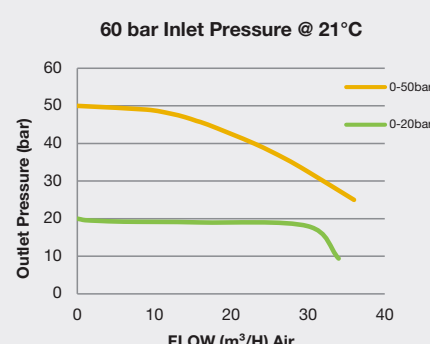
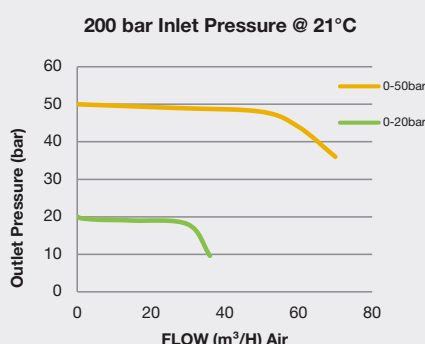
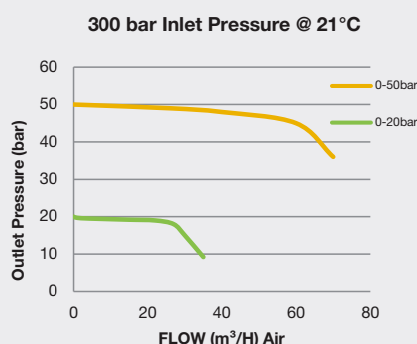
Body	Brass Barstock
Bonnet	Brass Barstock
Piston	Brass
Seal	FKM / EPDM
Seat	Polyamide (Nylon®)
Filter	10 Micron 316L Stainless Steel

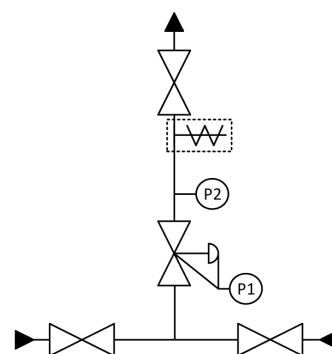
### 👍 SPECIFICATION






Maximum Inlet Pressure	60 bar (870 PSI) / 300 bar (4350 PSI)*
Delivery Pressure Range	20 bar (300 PSI) / 50 bar (725 PSI)
Gauges	50mm (2") Diameter
Ports	1/4" NPT Female
Temperature Range	-20° C to +60° C (-4° F to +140° F)
Flow Coefficient (Cv)	0.078
Weight	5.00kg (11.02 lbs)****

\* Subject to cylinder connection. \*\*\*\* Subject to final configuration.

### ✓ FLOW PERFORMANCE





-  - Isolation Valve
  - P2 Pressure Gauge
-  - Adjustable Pressure Regulator with P1 Pressure Gauge
  - Pressure Relief Valve
-  - Denotes a Configurable Option

[illegible]