

## SPEC MASTER HPD6000 SERIES

### 6.0 Purity Single Stage Nickel Plated Brass Barstock Diaphragm Differential Autochange Gas Control Panel

The Spec Master HPD6000 series single stage differential autochange control panels are designed for primary pressure gas control of non-corrosive or toxic, high purity gases up to grade 6.0 purity (99.9999%), on gas distribution systems where slight pressure variation is acceptable.

- **HPD6031 Series** | Single Stage Twin Cylinder Diaphragm Differential Autochange Gas Control Panel, FKM Seal, FFKM Pressure Relief Valve
- **HPD6032 Series** | Single Stage Twin Cylinder Diaphragm Differential Autochange Gas Control Panel, EPDM Seal, FFKM Pressure Relief Valve



### ★ FEATURES

- High pressure isolation valves
- High pressure purge facility
- Single stage pressure regulation
- Process line isolation valve
- Encapsulated seat design
- Twin cylinder configuration

### 📄 MATERIALS

|           |                                |
|-----------|--------------------------------|
| Body      | Nickel Plated Brass Barstock   |
| Bonnet    | Nickel Plated Brass Barstock   |
| Diaphragm | 316L Stainless Steel           |
| Seal      | PTFE                           |
| Seat      | PCTFE                          |
| Filter    | 10 Micron 316L Stainless Steel |

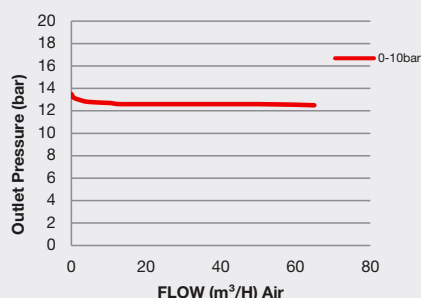
\* Subject to cylinder connection. \*\*\*\* Subject to final configuration.

### 👍 SPECIFICATION

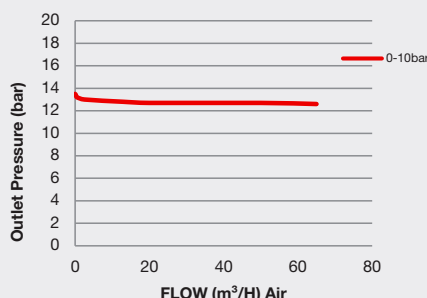
|                         |  |
|-------------------------|--|
| Maximum Inlet Pressure  | 60 bar (870 PSI) / 300 bar (4350 PSI)* |
| Delivery Pressure Range | 10 bar (150 PSI) Minimum               |
| Gauge                   | 50mm (2") Diameter                     |
| Ports                   | ¼" NPT Female                          |
| Temperature Range       | -20° C to +60° C (-4° F to +140° F)    |
| Flow Coefficient (Cv)   | 0.1                                    |
| Helium Leak Integrity   | 1x10 <sup>-9</sup> mbar l/s            |
| Weight                  | 8.00kg (17.64 lbs)****                 |

### ✓ FLOW PERFORMANCE

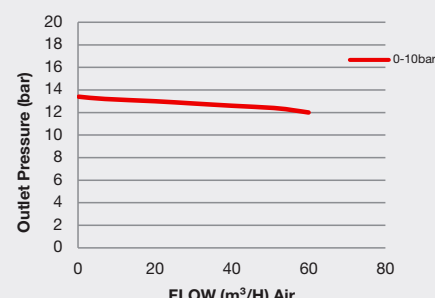
300 bar Inlet Pressure @ 21°C

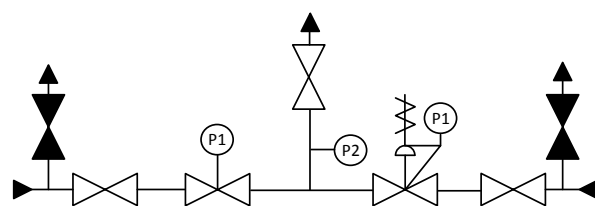







200 bar Inlet Pressure @ 21°C



60 bar Inlet Pressure @ 21°C





-  - Isolation Valve
  -  - Isolation Valve (Closed)
  -  - Fixed Pressure Regulator with P1 Pressure Gauge
  -  - Adjustable Pressure Regulator with P1 Pressure Gauge and Pressure Relief Valve
  -  - P2 Pressure Gauge