

LAB MASTER LGM5000 SERIES

5.0 Purity Single Stage Nickel Plated Brass Barstock Diaphragm Manual Change Gas Control Panel

The Lab Master LGM5000 series single stage manual change control panels are designed for primary pressure gas control of non-corrosive or toxic, high purity gases up to grade 5.0 purity (99.999%), on gas distribution systems where slight pressure variation is acceptable.

- **LGM5011 Series** | Single Stage Single Cylinder Diaphragm Manual Gas Change Control Panel, FKM Seal, FKM Pressure Relief Valve
- **LGM5012 Series** | Single Stage Single Cylinder Diaphragm Manual Gas Change Control Panel, EPDM Seal, EPDM Pressure Relief Valve
- **LGM5031 Series** | Single Stage Twin Cylinder Diaphragm Manual Gas Change Control Panel, FKM Seal, FKM Pressure Relief Valve
- **LGM5032 Series** | Single Stage Twin Cylinder Diaphragm Manual Gas Change Control Panel, EPDM Seal, EPDM Pressure



★ FEATURES

- High pressure isolation valves
- High pressure purge facility
- Single stage pressure regulation
- Process line isolation valve
- Encapsulated seat design
- Single and twin cylinder configuration

📄 MATERIALS

Body	Nickel Plated Brass Barstock
Bonnet	High Strength Alloy
Diaphragm	316L Stainless Steel
Seal	PTFE
Seat	Polyamide (Nylon®)
Filter	10 Micron 316L Stainless Steel

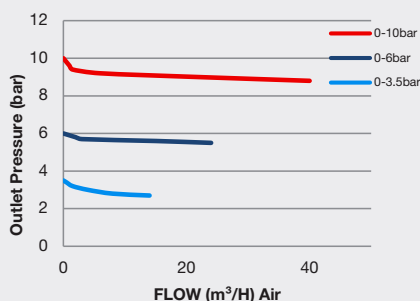
* Subject to cylinder connection. **** Subject to final configuration.

👍 SPECIFICATION

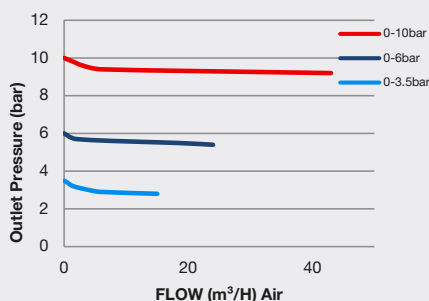
Maximum Inlet Pressure	60 bar (870 PSI) / 300 bar (4350 PSI)*
Delivery Pressure Range	3.5 bar (50 PSI) / 6 bar (90 PSI) / 10 bar (150 PSI)
Gauge	50mm (2") Diameter
Ports	1/4" NPT Female
Temperature Range	-20° C to +60° C (-4° F to +140° F)
Flow Coefficient (Cv)	0.1
Weight	5.00kg (11.02 lbs)****

✓ FLOW PERFORMANCE

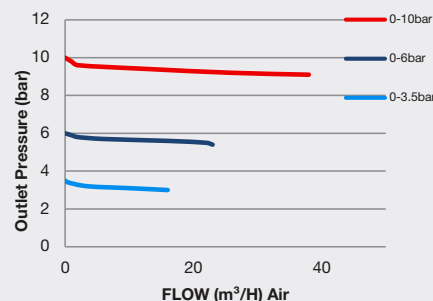
300 bar Inlet Pressure @ 21°C

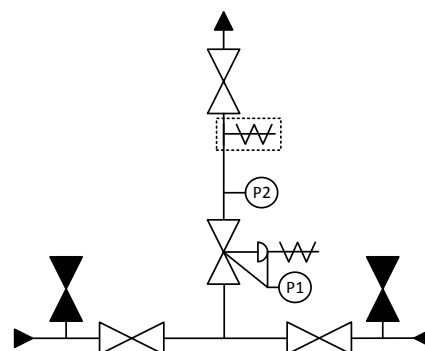








200 bar Inlet Pressure @ 21°C



60 bar Inlet Pressure @ 21°C





-  - Isolation Valve
 - Isolation Valve (Closed)
 - Adjustable Pressure Regulator with P1 Pressure Gauge and Pressure Relief Valve
 - P2 Pressure Gauge
 - Pressure Relief Valve
 - Denotes a Configurable Option