

LAB MASTER LGD5000 SERIES

5.0 Purity Single Stage Nickel Plated Brass Barstock Diaphragm Differential Autochange Gas Control Panel

The Lab Master LGD5000 series single stage differential autochange control panels are designed for primary pressure gas control of non-corrosive or toxic, high purity gases up to grade 5.0 purity (99.999%), on gas distribution systems where slight pressure variation is acceptable.

- **LGD5031 Series** | Single Stage Twin Cylinder Diaphragm Differential Autochange Gas Control Panel, FKM Seal, FKM Pressure Relief Valve
- **LGD5032 Series** | Single Stage Twin Cylinder Diaphragm Differential Autochange Gas Control Panel, EPDM Seal, EPDM Pressure Relief Valve



★ FEATURES

- High pressure isolation valves
- High pressure purge facility
- Single stage pressure regulation
- Process line isolation valve
- Encapsulated seat design
- Twin cylinder configuration

✎ MATERIALS

Body	Nickel Plated Brass Barstock
Bonnet	High Strength Alloy
Diaphragm	316L Stainless Steel
Seal	PTFE
Seat	Polyamide (Nylon®)
Filter	10 Micron 316L Stainless Steel

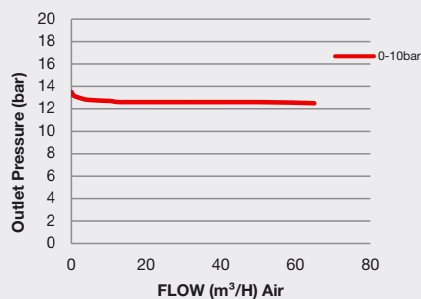
* Subject to cylinder connection. **** Subject to final configuration.

👍 SPECIFICATION

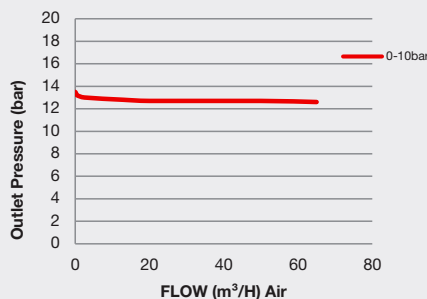
Maximum Inlet Pressure	60 bar (870 PSI) / 300 bar (4350 PSI)*
Delivery Pressure Range	10 bar (150 PSI) Minimum
Gauge	50mm (2") Diameter
Ports	1/4" NPT Female
Temperature Range	-20° C to +60° C (-4° F to +140° F)
Flow Coefficient (Cv)	0.1
Weight	8.00kg (17.64 lbs)****

✓ FLOW PERFORMANCE

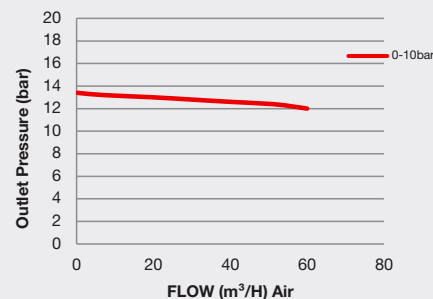
300 bar Inlet Pressure @ 21°C

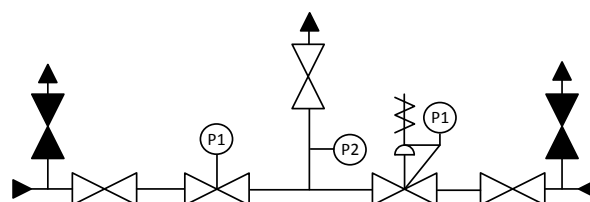







200 bar Inlet Pressure @ 21°C



60 bar Inlet Pressure @ 21°C





-  - Isolation Valve
 - Isolation Valve (Closed)
 - Fixed Pressure Regulator with P1 Pressure Gauge
 - Adjustable Pressure Regulator with P1 Pressure Gauge and Pressure Relief Valve
 - P2 Pressure Gauge