



LAB MASTER LGT510 SERIES

5.0 Purity Two Stage Nickel Plated Brass Barstock Diaphragm Cylinder Regulator - Acetylene

Lab Master LGT510 series two stage diaphragm cylinder regulators are designed for primary pressure gas control of high purity Acetylene gas up to grade 5.0 purity (99.999%), on applications where constant delivery pressure is required as the cylinder pressure decreases.

- **LGT510 Series** | Two Stage Diaphragm Cylinder Regulator Acetylene, EPDM Seal, EPDM Pressure Relief Valve - Acetylene



FEATURES

- Six port configuration
- Encapsulated seat design
- Low wetted surface area
- Full range of inlet and outlet fittings
- Side entry



MATERIALS

Body	Nickel Plated Brass Barstock
Bonnet	High Strength Alloy
Diaphragm	316L Stainless Steel
Seal	PTFE
Seat	Polyamide (Nylon®)
Filter	10 Micron 316L Stainless Steel

** Cylinder connection not included

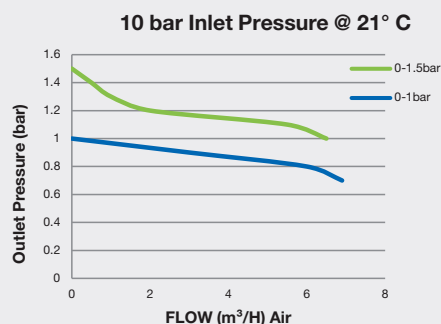
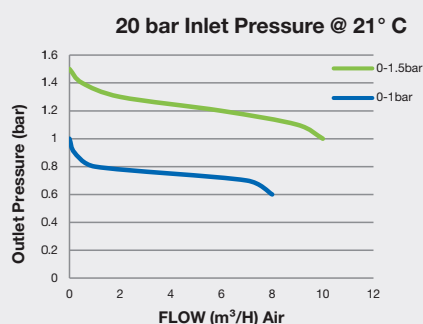


SPECIFICATION

Maximum Inlet Pressure	25 bar (360 PSI)
Delivery Pressure Range	1 bar (15 PSI) / 1.5 bar (22 PSI)
Gauges	50mm (2") Diameter
Ports	1/4" NPT Female
Temperature Range	-20° C to +60° C (-4° F to +140° F)
Flow Coefficient (Cv)	0.079
Weight	1.7 kg (3.8 lb)**

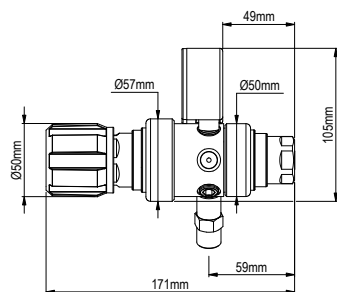
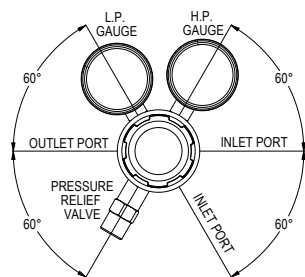


FLOW PERFORMANCE

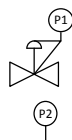
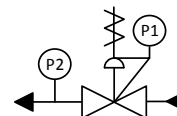




DIMENSIONS



PROCESS & INSTRUMENTATION



- Adjustable Pressure Regulator with P1 Pressure Gauge



- Pressure Relief Valve

Model No. Selector Guide

Product Type	Inlet Pressure	Outlet Pressure	Inlet Pressure Gauge	Outlet Pressure Gauge	Inlet/Cylinder Connection	Outlet Connection	Options
LGT510	01 25 bar / 360 PSI	02 -1 - 1 bar / 15 PSI	00 No Gauge Fitted	00 No Gauge Fitted	000 No Inlet Fitted	00 No Outlet Fitted	A No Options Selected
		03 -1 - 1.5 bar / 22 PSIG	01 bar/PSI	01 bar/PSI	001 1/8 Stainless Steel Compression	01 1/8 Stainless Steel Compression	C Regulator Tee Purge EPDM
			10 Plugged Port	10 Plugged Port	002 1/4 Stainless Steel Compression	02 1/4 Stainless Steel Compression	K Certificate of Conformity
					003 6mm Stainless Steel Compression	03 6mm Stainless Steel Compression	P Calibration / Pressure Test Certificate
					004 1/4 NPT Male	04 1/4 NPT Male	X Special Instruction
					008 G3/8 BSP L/H Brass Male	08 G3/8 BSP L/H Brass Male	
					011 BS341 No.4 (Base Entry)	10 Isolation Valve, 1/4 NPT Female, EPDM Seal	
					012 BS341 No.4	12 Isolation Valve, 1/8 Stainless Steel Compression, EPDM Seal	
					027 DIN477 No.3	14 Isolation Valve, 1/4 Stainless Steel Compression, EPDM Seal	
					028 DIN477 No.3.1	16 Isolation Valve, 6mm Stainless Steel Compression, EPDM Seal	
					050 CGA510	18 Isolation Valve, 1/4 NPT Male, EPDM seal	
					For our complete range of cylinder connections refer to 'Cylinder Connection Data'	22 Isolation Valve, G3/8 BSP L/H Brass Male, EPDM Seal	