



LAB MASTER LGL510 SERIES

5.0 Purity Single Stage Nickel Plated Brass Barstock Diaphragm Line Regulator - Acetylene

Lab Master LGL510 series single stage diaphragm line regulators are designed for secondary pressure gas control of high purity Acetylene gas up to grade 5.0 purity (99.999%), on gas distribution systems.

■ **LGL510 Series** | Single Stage Diaphragm
Line Regulator - Acetylene

★ FEATURES

- Four port configuration
- Rear panel mounting capabilities
- Encapsulated seat design
- Low wetted surface area
- Full range of inlet and outlet fittings
- Side entry

📄 MATERIALS

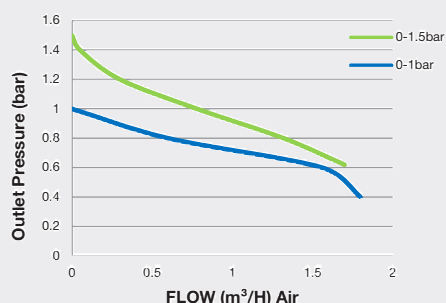
Body	Nickel Plated Brass Barstock
Bonnet	High Strength Alloy
Diaphragm	316L Stainless Steel
Seal	PTFE
Seat	Polyamide (Nylon®)
Filter	10 Micron 316L Stainless Steel

👍 SPECIFICATION

Maximum Inlet Pressure	25 bar (360 PSI)
Delivery Pressure Range	1 bar (15 PSI) / 1.5 bar (22 PSI)
Gauges	50mm (2") Diameter
Ports	1/4" NPT Female
Temperature Range	-20° C to +60° C (-4° F to +140° F)
Flow Coefficient (Cv)	0.1
Weight	1.1 kg (2.5 lb)

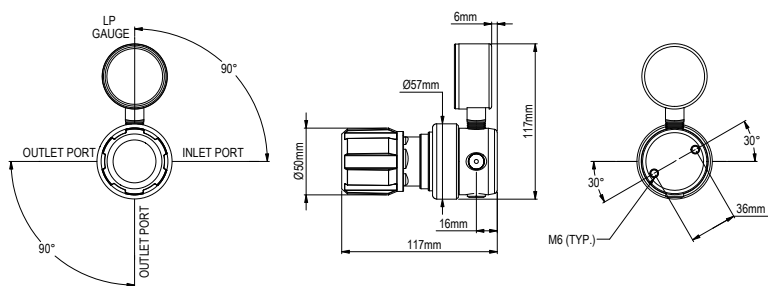
✓ FLOW PERFORMANCE

1.5 bar Inlet Pressure @ 21° C

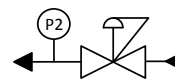




DIMENSIONS



PROCESS & INSTRUMENTATION



- Adjustable Pressure Regulator



- P2 Pressure Gauge

Model No. Selector Guide

Product Type	Inlet Pressure	Outlet Pressure	Inlet Pressure Gauge	Outlet Pressure Gauge	Inlet Connection	Outlet Connection	Options
LGL510	01 25 bar / 360 PSI	01 -1 - 1 bar / 15 PSI	00 No Gauge Fitted	00 No Gauge Fitted	000 No Inlet Fitted	00 No Outlet Fitted	A No Options Selected
		02 -1 - 1.5 bar / 22 PSIG		01 bar/PSI	001 1/8 Stainless Steel Compression	01 1/8 Stainless Steel Compression	K Certificate of Conformity
				10 Plugged Port	002 1/4 Stainless Steel Compression	02 1/4 Stainless Steel Compression	P Calibration / Pressure Test Certificate
					003 6mm Stainless Steel Compression	03 6mm Stainless Steel Compression	X Special Instruction
					004 1/4 NPT Male	04 1/4 NPT Male	
					008 G3/8 BSP L/H Brass Male	08 G3/8 BSP L/H Brass Male	
						10 Isolation Valve, 1/4 NPT Female, EPDM Seal	
						12 Isolation Valve, 1/8 Stainless Steel Compression, EPDM Seal	
						14 Isolation Valve, 1/4 Stainless Steel Compression, EPDM Seal	
						16 Isolation Valve, 6mm Stainless Steel Compression, EPDM Seal	
						18 Isolation Valve, 1/4 NPT Male, EPDM seal	
						22 Isolation Valve, G3/8 BSP L/H Brass Male, EPDM Seal	