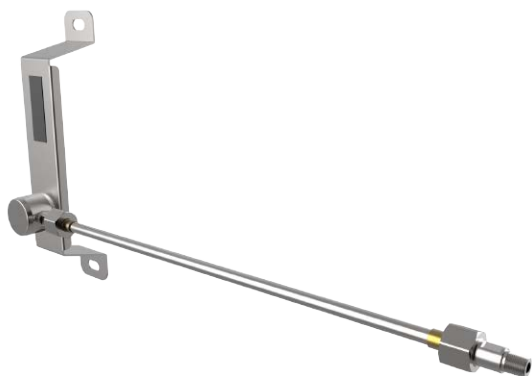


LAB MASTER LGH50 SERIES

5.0 Purity Header Rail Assemblies

The Lab Master range of header rail assemblies are designed for use with non-corrosive or toxic, high purity gases up to grade 5.0 purity (99.999%). They are intended for use in conjunction with our gas control panels integrated within gas management and distribution systems.

- **LGH511 Series** | Lab Master Universal Left, FKM Seal
- **LGH512 Series** | Lab Master Universal Left Hand Header, EPDM Seal
- **LGH521 Series** | Lab Master Universal Right Hand Header, FKM Seal
- **LGH522 Series** | Lab Master Universal Right Hand Header, EPDM Seal



Left handed configuration shown



FEATURES

3 Inlet & 1 Outlet Ports

Left or Right Hand Configuration

1/4" NPT Male Connection

Supplied with 2 off 1/4" NPT Plugs

Flat Face 'O' Ring Seal



SPECIFICATION

Maximum Inlet Pressure 300 bar (4350 PSI)

Ports 1/4" NPT Female

Temperature Range -20° C to +60° C (-4° F to +140° F)

Weight 0.60 kg (1.32 lbs) Maximum



MATERIALS

Bracket Stainless Steel

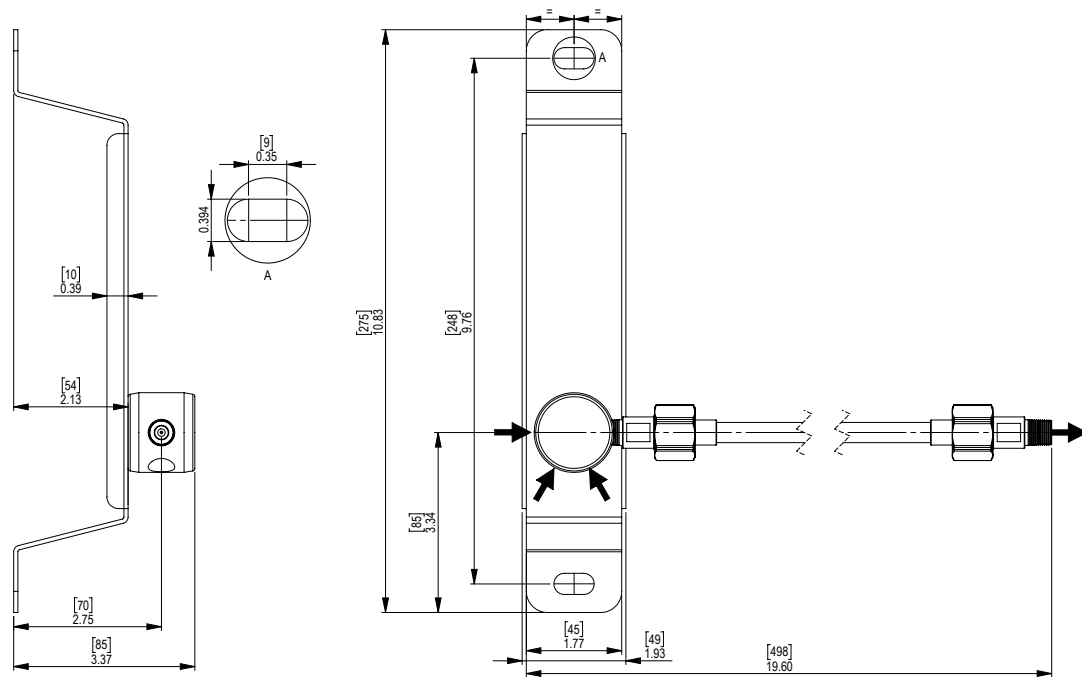
Body Nickel Plated Brass Barstock

Connecting Tube Cupro-Nickel

Connections Nickel Plated Brass Barstock

Model No. Selector Guide

Product Type	Inlet Pressure	Options
LGH511	04 300 bar / 4350 PSI	A No Options Selected
LGH512		K Certificate of Conformity
LGH521		X Special Instruction
LGH522		



CONTROL PANEL WITH HEADER INSTALLATION GUIDE

Inches [mm]

