

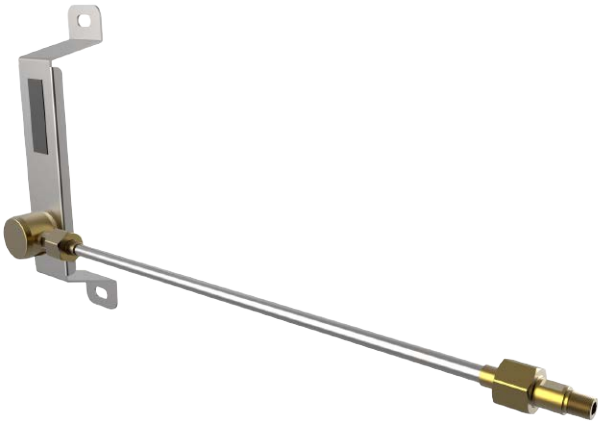


TECH MASTER GPH400 SERIES

4.5 Purity Header Rail Assemblies

The Tech Master range of header rail assemblies are designed for use with non-corrosive or toxic, technical gases up to grade 4.5 purity (99.995%). They are intended for use in conjunction with our gas control panels integrated within gas management and distribution systems.

- **GPH411 Series** | Tech Master Universal Left Hand Header, FKM Seal
- **GPH412 Series** | Tech Master Universal Left Hand Header, EPDM Seal
- **GPH421 Series** | Tech Master Universal Right Hand Header, FKM Seal
- **GPH422 Series** | Tech Master Universal Right Hand Header, EPDM Seal



Left handed configuration shown

★ FEATURES

- 3 Inlet & 1 Outlet Ports
- Left or Right Hand Configuration
- 1/4" NPT Male Connection
- Supplied with 2 off 1/4" NPT Plugs
- Flat Face 'O' Ring Seal

📄 MATERIALS

Bracket	Stainless Steel
Body	Brass Barstock
Connecting Tube	Cupro-Nickel
Connections	Brass Barstock

👍 SPECIFICATION

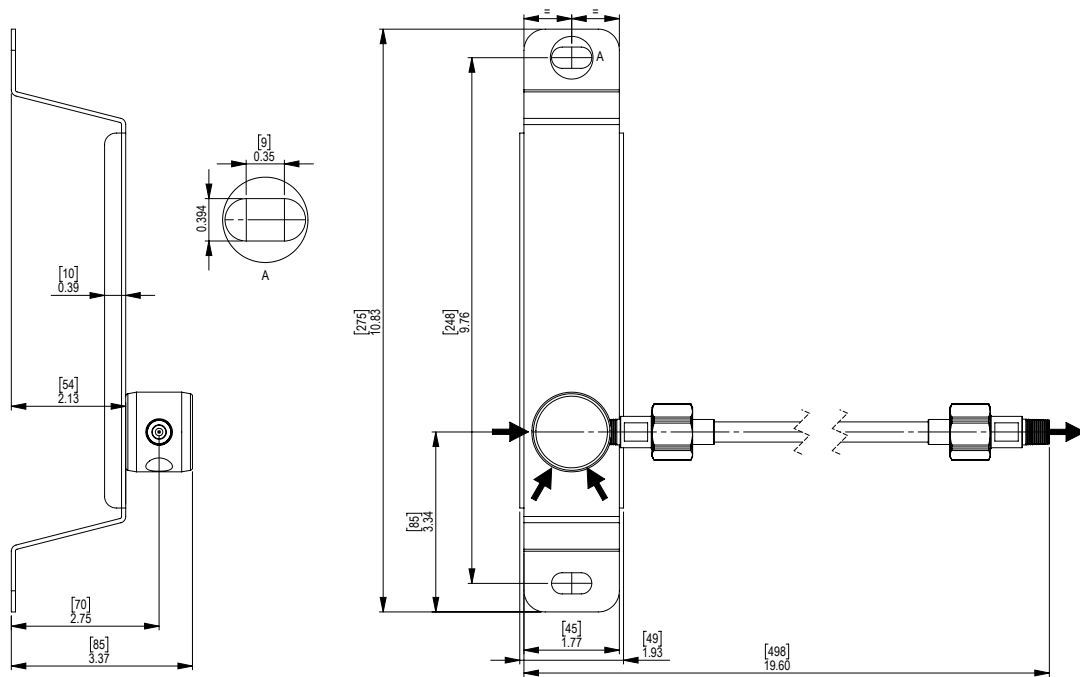
Maximum Inlet Pressure	300 bar (4350 PSI)
Ports	1/4" NPT Female
Temperature Range	-20° C to +60° C (-4° F to +140° F)
Weight	0.60 kg (1.32 lbs) Maximum

Model No. Selector Guide

Product Type	Inlet Pressure	Options
GPH411	04 300 bar / 4350 PSI	A No Options Selected
GPH412		K Certificate of Conformity
GPH421		X Special Instruction
GPH422		



DIMENSIONS



CONTROL PANEL WITH HEADER INSTALLATION GUIDE

Inches [mm]

